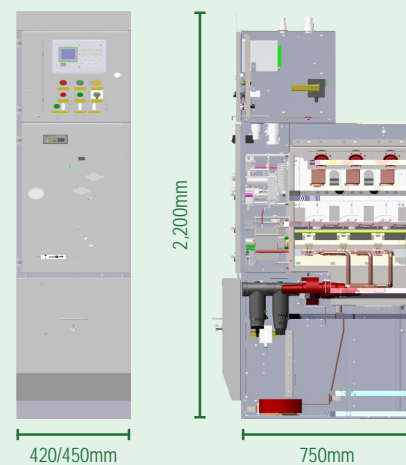
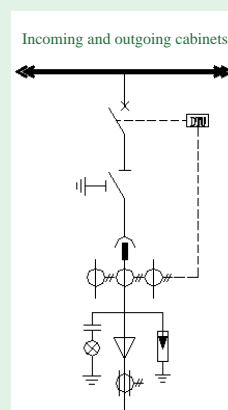


The ZCSF-12/ZCKQG-12 RMU is suitable for power system in the three-phase 50 Hz with the rated voltage of 3.6 to 12 kV. It is mainly used in industrial and civil cable ring networks and power supply terminals. The product is compatible with vacuum circuit breakers, SF<sub>6</sub> load break switches, and load switch/fuse combination units. It is adaptable to indoor environments with altitude up to 4,000m.



limits

pollution,chemical corrosion

class earthing switch (5 times)

mechanically type tested for 10,000 and 5,000 operations respectively

controlgear for rated voltages above 3.6kV and up to and including 40.5 kV

load switch

1 kV and up to and including 52 kV

video footages can be stored and shared

--	--	--